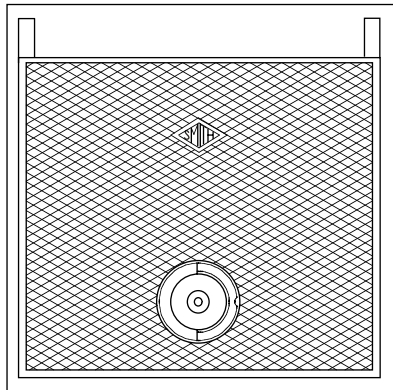




HYDRANTS

NON-FREEZE GROUND HYDRANT BOX TYPE HYDRANT WITH DUCTILE IRON COVER

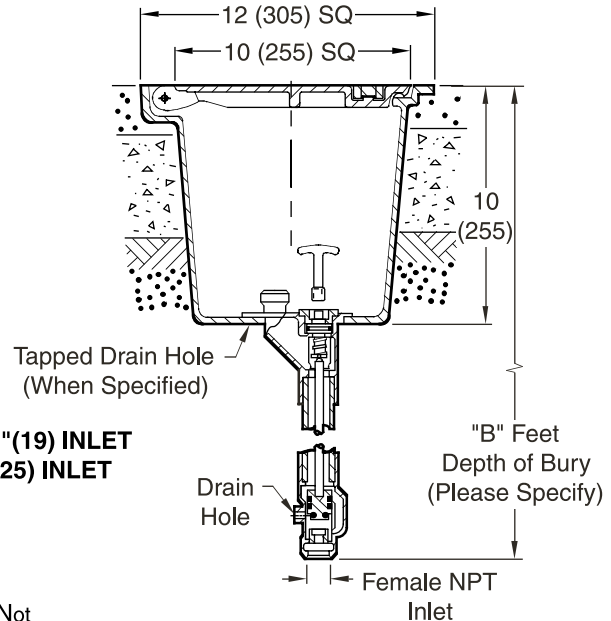
FUNCTION: Hydrant with hinged cover and box, for applications which require a flush with ground non-freeze hydrant. The closing valve is located below the frost line. When hydrant is shut off water is drained from the casing through the drain hole in the valve housing.



TOP VIEW



FIG. M-3950 . . 3/4" (19) INLET
FIG. M-3951 . . 1" (25) INLET



B (Depth of Bury) = 02(610), 03(915), 04(1220), 05(1525),
06(1830) 07(2135) or 08(2438) Feet

- NOTE:**
1. Addition of vacuum breaker will not allow draining of the casing, Not responsible for any casings that burst or related incidents if the hydrant is supplied with a vacuum breaker.
 2. All hydrants are manufactured with "NO-LEAD" brazing rings and USDA approved lubricants.
 3. The AB1953, California Lead Law, and NSF/ANSI Standard 61-2008 - Drinking Water System Components are not applicable to hydrants as they do not convey/dispense water for human consumption through drinking or cooking.
 4. Dimensions shown in parentheses are in millimeters.
 5. When installed in parking decks, garages or similar applications subjected to vehicle traffic, hydrant shall be located in a non-traffic location.
 6. FOR IRRIGATION PURPOSES ONLY.

REGULARLY FURNISHED:

Bronze Hydrant with Bronze Casing.
"T" Handle Key and Cast Iron Box
with Ductile Iron Cover with Lifting
Device.

VARIATIONS:

- 1" (25) Hose Connection Adaptor -HC1
- 1/8" (3) NPT Drain Hole in Box -N
- 1/8" (3) NPT Drain Hole in Valve Housing -NV
- "Water" Cast on Cover -W

OPTIONAL MATERIALS:

- Nickel Bronze Top -NB
- Polished Bronze Top -PB
- Rough Bronze Top -RB

TECHNICAL DATA

Non-Freeze Ground Hydrants are supplied with a special valve housing which prevents freezing of hydrant during non-use periods. The valve housing must be installed below the frost line which prevails for the area of installation. The valve housing has a drain hole which drains the casing during non-use periods. Since water from the drain hole is normally allowed to drain into the ground, the valve housing should be set in a bed of gravel. Water drained from the casing can then seep into the ground.

Some locations which require Non-Freeze Ground Hydrants cannot tolerate water draining from the drain hole. Examples are parking garages, plazas and roof decks used for recreational purposes. Often in these types of applications the valve housing will protrude into a finished area which is not subject to freezing temperatures. To eliminate the problem of water drainage in this type of installation, Murdock can supply a tapped drain hole in the hydrant box and a tapped drain hole in the valve housing. Through these tapped drain holes, water accumulation in the box and the water from the valve housing drain hole can be piped to a suitable drain.

⚠ WARNING: Cancer and Reproductive Harm - www.P65Warnings.ca.gov

MURDOCK MFG. • 15125 Proctor Avenue • City of Industry, CA 91746 USA
Phone 800-453-7465 or 626-333-2543 • Fax 626-855-4860 • www.murdockmfg.com

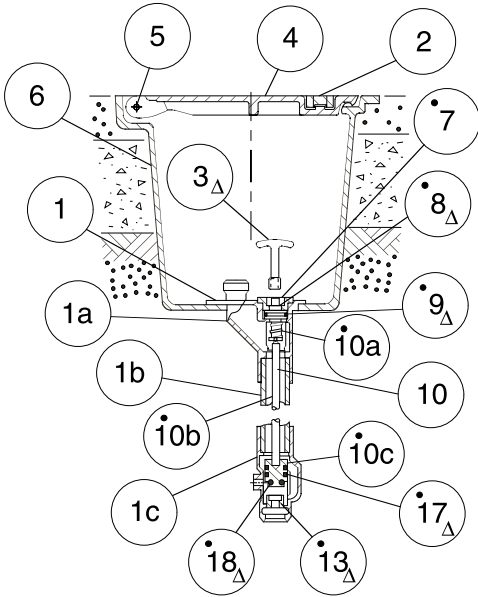
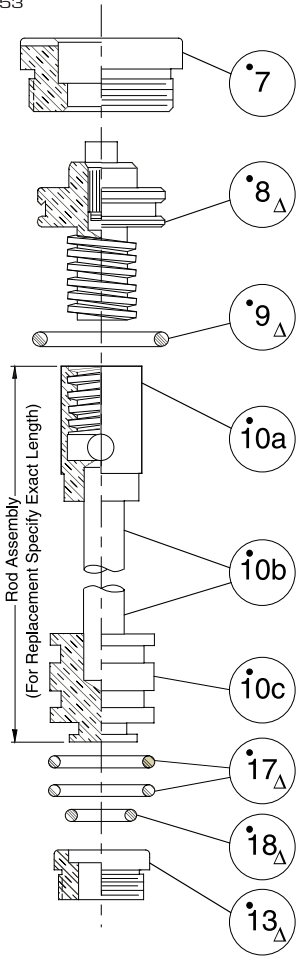
Member of
MORRIS GROUP
INTERNATIONAL



HYDRANTS

Hydrant Part List With Maintenance Instructions

NON-FREEZE
GROUND HYDRANT



- These parts are accessible from face of hydrant by removing face nut.
- △ These replacement parts available in HPRK-41.

MAINTENANCE INSTRUCTIONS

1. Shut off water supply.
2. Remove face nut.
3. Pull stem out for complete access to all working parts.
4. Check all working parts for replacement.
5. Replace complete stem assembly and face nut.

REPLACEMENT PARTS LIST-SPECIFY FIGURE NO. WHEN ORDERING

No.	DESCRIPTION	No.	DESCRIPTION
1	Head/Casing Assembly	8	Operating Screw
1a	Head	9	Operating Screw "O" Ring
1b	Casey	10	Operating Rod Assembly
1c	Valve Housing	10a	Coupling
2	Lifting Device	10b	Rod
3	Key	10c	Plunger
4	Cover	13	Removable Seat
5	Hydrant Cover Hinge Pins(2)	17	Plunger "O" Ring
6	Box	18	Plunger "O" Ring
7	Face Nut		

Murdock Mfg.™ warrants that its products are free from defects in material or workmanship under normal use and service for a period of one year from date of shipment. Murdock's liability under this warranty shall be discharged solely by replacement or repair of defective material, provided Murdock™ is notified in writing within one year from date of shipment, F.O.B. Industry, California.

SELECTION SUMMARY & APPROVAL FOR MANUFACTURING	Model Number & Options _____	Quantity _____	All dimensions are subject to manufactures tolerance of plus or minus 1/2" nominal and subject to change without notice. Murdock assumes no responsibility for use of void or superseded data. Dimensions may change with the addition of optional accessories. Murdock Mfg.™, Member of Morris Group International™. Please visit www.murdockmfg.com for most current specifications.
	Company _____		
	Contact _____	Title _____	
	Signature (Approval for Manufacturing) _____	Date _____	

MURDOCK MFG. • 15125 Proctor Avenue • City of Industry, CA 91746 USA
 Phone 800-453-7465 or 626-333-2543 • Fax 626-855-4860 • www.murdockmfg.com

